

PLT1

ISO 16028/STANDARD

VALVOLA PIANA/ACCIAIO
 FLAT FACE/STEEL
 FLACHDICHTEND/STAHL
 CLAPET PLAT/ACIER



PLT4

ISO 16028/350 BAR

VALVOLA PIANA/ACCIAIO
 FLAT FACE/STEEL
 FLACHDICHTEND/STAHL
 CLAPET PLAT/ACIER



PLT5

ISO 16028/HIGH RESISTANCE

MASCHIO VALVOLA PIANA PER MARTELLI
 FLAT FACE MALE FOR HAMMERS
 FLACHDICHTENDER STECKER FÜR HÄMMER
 MÂLE CLAPET PLAT POUR MARTEAUX



PLT6

ISO 16028/700 BAR

VALVOLA PIANA/ACCIAIO
 FLAT FACE/STEEL
 FLACHDICHTEND/STAHL
 CLAPET PLAT/ACIER



PLT7

700 BAR/HP

VALVOLA PIANA/ACCIAIO
 FLAT FACE/STEEL
 FLACHDICHTEND/STAHL
 CLAPET PLAT/ACIER

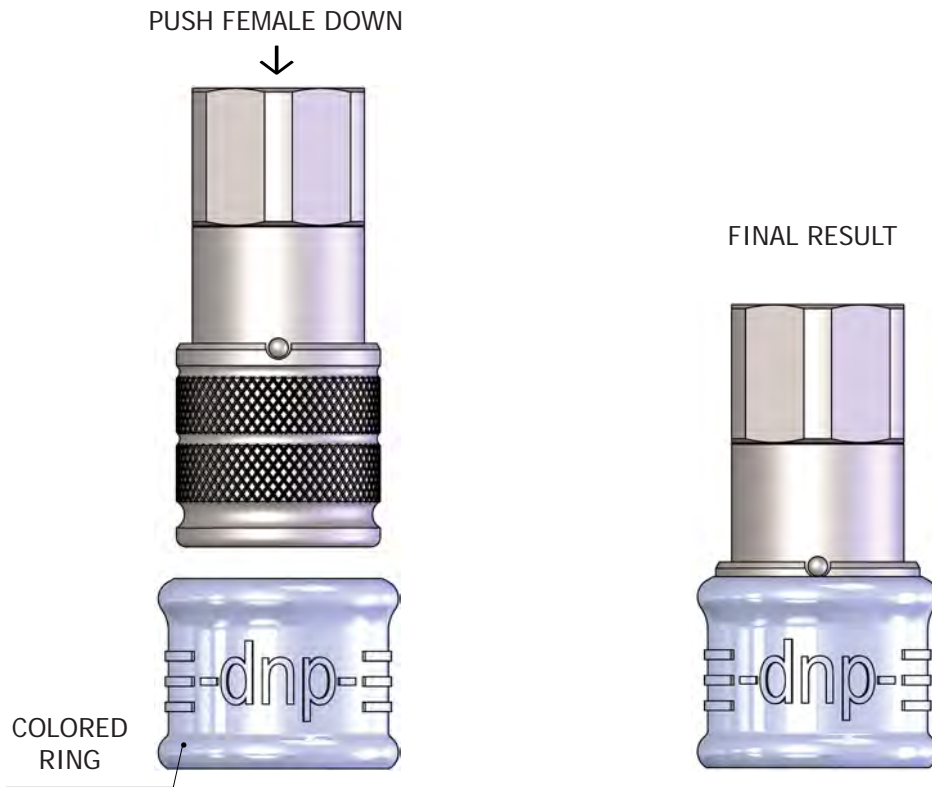


PLTX

ISO 16028/STAINLESS STEEL

VALVOLA PIANA/ACCIAIO INOX
 FLAT FACE/STAINLESS STEEL
 FLACHDICHTEND/EDELSTAHL
 CLAPET PLAT/ACIER INOX



FEMALE: ASSEMBLY INSTRUCTIONS OF COLORED RINGS/PART NUMBERS


PLT1 DN06 - ISO 6.3		
CODE	COLOR	MATERIAL
PLT.006.802	●	TPEE
PLT.006.812	●	TPEE
PLT.006.822	●	TPEE
PLT.006.832	●	TPEE
PLT.006.842	●	TPEE
PLT.006.852	○	TPEE
PLT.006.862	●	TPEE
PLT.006.872	●	TPEE
PLT.006.882	●	TPEE
PLT.006.892	●	TPEE

PLT1 DN13 - ISO 10		
CODE	COLOR	MATERIAL
PLT.013.802	●	TPEE
PLT.013.812	●	TPEE
PLT.013.822	●	TPEE
PLT.013.832	●	TPEE
PLT.013.842	●	TPEE
PLT.013.852	○	TPEE
PLT.013.862	●	TPEE
PLT.013.872	●	TPEE
PLT.013.882	●	TPEE
PLT.013.892	●	TPEE

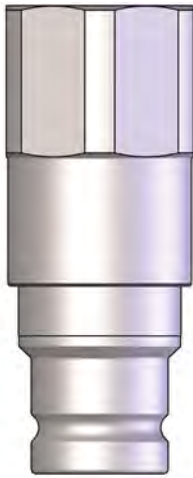
PLT1 DN20 - ISO 12.5		
CODE	COLOR	MATERIAL
PLT.019.802	●	TPEE
PLT.019.812	●	TPEE
PLT.019.822	●	TPEE
PLT.019.832	●	TPEE
PLT.019.842	●	TPEE
PLT.019.852	○	TPEE
PLT.019.862	●	TPEE
PLT.019.872	●	TPEE
PLT.019.882	●	TPEE
PLT.019.892	●	TPEE

PLT1 DN25 - ISO 19		
CODE	COLOR	MATERIAL
PLT.025.802	●	TPEE
PLT.025.812	●	TPEE
PLT.025.822	●	TPEE
PLT.025.832	●	TPEE
PLT.025.842	●	TPEE
PLT.025.852	○	TPEE
PLT.025.862	●	TPEE
PLT.025.872	●	TPEE
PLT.025.882	●	TPEE
PLT.025.892	●	TPEE

PLT1 DN30 - ISO 25		
CODE	COLOR	MATERIAL
PLT.030.802	●	TPEE
PLT.030.812	●	TPEE
PLT.030.822	●	TPEE
PLT.030.832	●	TPEE
PLT.030.842	●	TPEE
PLT.030.852	○	TPEE
PLT.030.862	●	TPEE
PLT.030.872	●	TPEE
PLT.030.882	●	TPEE
PLT.030.892	●	TPEE

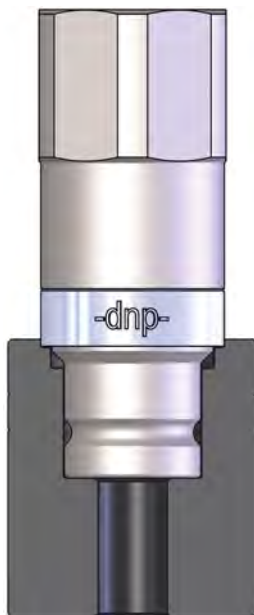
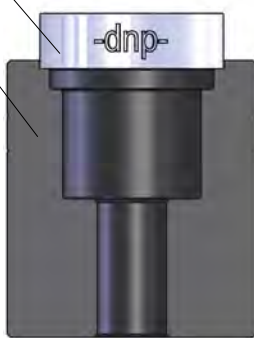
MALE: ASSEMBLY INSTRUCTIONS OF COLORED RINGS/PART NUMBERS

PUSH MALE DOWN
↓



COLORED RING

TOOL COD.



FINAL RESULT

TOOL COD.

PLT.006.8X3

PLT1 DN06 - ISO 6.3

CODE	COLOR	MATERIAL
PLT.006.803	●	PP
PLT.006.813	●	PP
PLT.006.823	●	PP
PLT.006.833	●	PP
PLT.006.843	●	PP
PLT.006.853	○	PP
PLT.006.863	●	PP
PLT.006.873	●	PP
PLT.006.883	●	PP
PLT.006.893	●	PP

TOOL COD.

PLT.613.8X3

PLT1 DN13 - ISO 10

CODE	COLOR	MATERIAL
PLT.613.803	●	PP
PLT.613.813	●	PP
PLT.613.823	●	PP
PLT.613.833	●	PP
PLT.613.843	●	PP
PLT.613.853	○	PP
PLT.613.863	●	PP
PLT.613.873	●	PP
PLT.613.883	●	PP
PLT.613.893	●	PP

TOOL COD.

PLT.019.8X3

PLT1 DN20 - ISO 12.5

CODE	COLOR	MATERIAL
PLT.019.803	●	PP
PLT.019.813	●	PP
PLT.019.823	●	PP
PLT.019.833	●	PP
PLT.019.843	●	PP
PLT.019.853	○	PP
PLT.019.863	●	PP
PLT.019.873	●	PP
PLT.019.883	●	PP
PLT.019.893	●	PP

TOOL COD.

PLT.025.8X3

PLT1 DN25 - ISO 19

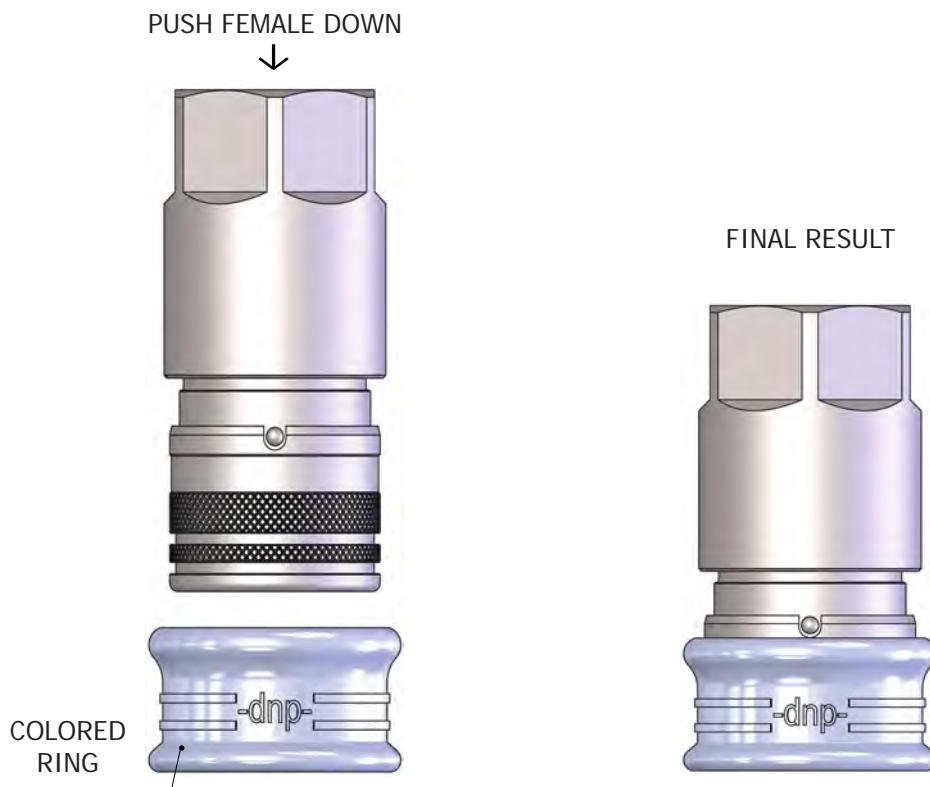
CODE	COLOR	MATERIAL
PLT.025.803	●	PP
PLT.025.813	●	PP
PLT.025.823	●	PP
PLT.025.833	●	PP
PLT.025.843	●	PP
PLT.025.853	○	PP
PLT.025.863	●	PP
PLT.025.873	●	PP
PLT.025.883	●	PP
PLT.025.893	●	PP

TOOL COD.

PLT.031.8X3

PLT1 DN30 - ISO 25

CODE	COLOR	MATERIAL
PLT.031.803	●	PP
PLT.031.813	●	PP
PLT.031.823	●	PP
PLT.031.833	●	PP
PLT.031.843	●	PP
PLT.031.853	○	PP
PLT.031.863	●	PP
PLT.031.873	●	PP
PLT.031.883	●	PP
PLT.031.893	●	PP

FEMALE: ASSEMBLY INSTRUCTIONS OF COLORED RINGS/PART NUMBERS


PLT4 DN06 - ISO 6.3		
CODE	COLOR	MATERIAL
PLT.006.802	●	TPEE
PLT.006.812	●	TPEE
PLT.006.822	●	TPEE
PLT.006.832	●	TPEE
PLT.006.842	●	TPEE
PLT.006.852	○	TPEE
PLT.006.862	●	TPEE
PLT.006.872	●	TPEE
PLT.006.882	●	TPEE
PLT.006.892	●	TPEE

PLT4 DN13 - ISO 10		
CODE	COLOR	MATERIAL
PLT.013.802	●	TPEE
PLT.013.812	●	TPEE
PLT.013.822	●	TPEE
PLT.013.832	●	TPEE
PLT.013.842	●	TPEE
PLT.013.852	○	TPEE
PLT.013.862	●	TPEE
PLT.013.872	●	TPEE
PLT.013.882	●	TPEE
PLT.013.892	●	TPEE

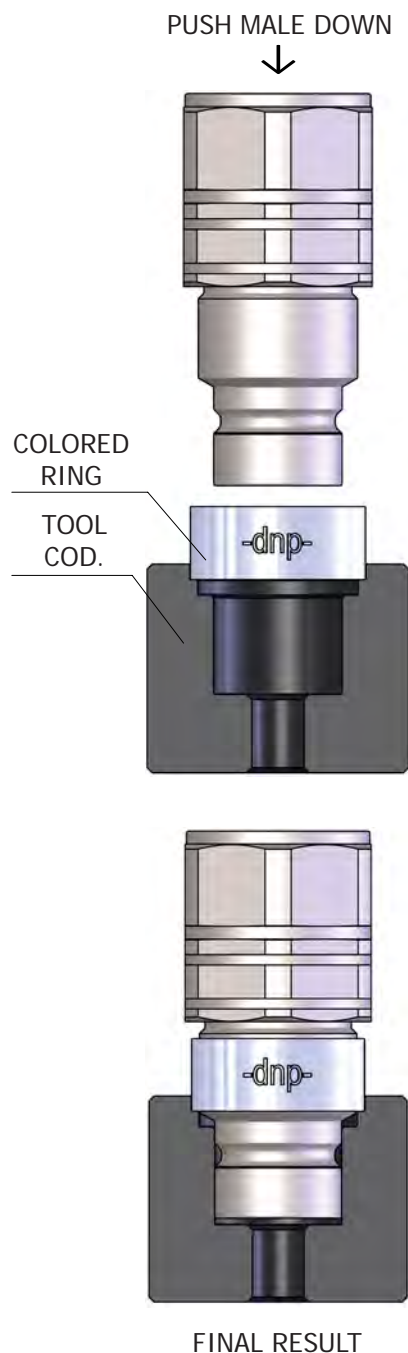
PLT4 DN20 - ISO 12.5		
CODE	COLOR	MATERIAL
PLT.019.802	●	TPEE
PLT.019.812	●	TPEE
PLT.019.822	●	TPEE
PLT.019.832	●	TPEE
PLT.019.842	●	TPEE
PLT.019.852	○	TPEE
PLT.019.862	●	TPEE
PLT.019.872	●	TPEE
PLT.019.882	●	TPEE
PLT.019.892	●	TPEE

PLT4 DN22 - ISO 16		
CODE	COLOR	MATERIAL
PLT.022.802	●	TPEE
PLT.022.812	●	TPEE
PLT.022.822	●	TPEE
PLT.022.832	●	TPEE
PLT.022.842	●	TPEE
PLT.022.852	○	TPEE
PLT.022.862	●	TPEE
PLT.022.872	●	TPEE
PLT.022.882	●	TPEE
PLT.022.892	●	TPEE

PLT4 DN25 - ISO 19		
CODE	COLOR	MATERIAL
PLT.025.802	●	TPEE
PLT.025.812	●	TPEE
PLT.025.822	●	TPEE
PLT.025.832	●	TPEE
PLT.025.842	●	TPEE
PLT.025.852	○	TPEE
PLT.025.862	●	TPEE
PLT.025.872	●	TPEE
PLT.025.882	●	TPEE
PLT.025.892	●	TPEE

PLT4 DN30 - ISO 25		
CODE	COLOR	MATERIAL
PLT.030.802	●	TPEE
PLT.030.812	●	TPEE
PLT.030.822	●	TPEE
PLT.030.832	●	TPEE
PLT.030.842	●	TPEE
PLT.030.852	○	TPEE
PLT.030.862	●	TPEE
PLT.030.872	●	TPEE
PLT.030.882	●	TPEE
PLT.030.892	●	TPEE

MALE: ASSEMBLY INSTRUCTIONS OF COLORED RINGS/PART NUMBERS



TOOL COD.		
PLT.006.8X3		
PLT4 DN06 - ISO 6.3		
CODE	COLOR	MATERIAL
PLT.006.803	●	PP
PLT.006.813	●	PP
PLT.006.823	●	PP
PLT.006.833	●	PP
PLT.006.843	●	PP
PLT.006.853	○	PP
PLT.006.863	●	PP
PLT.006.873	●	PP
PLT.006.883	●	PP
PLT.006.893	●	PP

TOOL COD.		
PLT.013.8X3		
PLT4 DN13 - ISO 10		
CODE	COLOR	MATERIAL
PLT.013.803	●	PP
PLT.013.813	●	PP
PLT.013.823	●	PP
PLT.013.833	●	PP
PLT.013.843	●	PP
PLT.013.853	○	PP
PLT.013.863	●	PP
PLT.013.873	●	PP
PLT.013.883	●	PP
PLT.013.893	●	PP

TOOL COD.		
PLT.019.8X3		
PLT4 DN20 - ISO 12.5		
CODE	COLOR	MATERIAL
PLT.019.803	●	PP
PLT.019.813	●	PP
PLT.019.823	●	PP
PLT.019.833	●	PP
PLT.019.843	●	PP
PLT.019.853	○	PP
PLT.019.863	●	PP
PLT.019.873	●	PP
PLT.019.883	●	PP
PLT.019.893	●	PP

TOOL COD.		
PLT.022.8X3		
PLT4 DN22 - ISO 16		
CODE	COLOR	MATERIAL
PLT.022.803	●	PP
PLT.022.813	●	PP
PLT.022.823	●	PP
PLT.022.833	●	PP
PLT.022.843	●	PP
PLT.022.853	○	PP
PLT.022.863	●	PP
PLT.022.873	●	PP
PLT.022.883	●	PP
PLT.022.893	●	PP

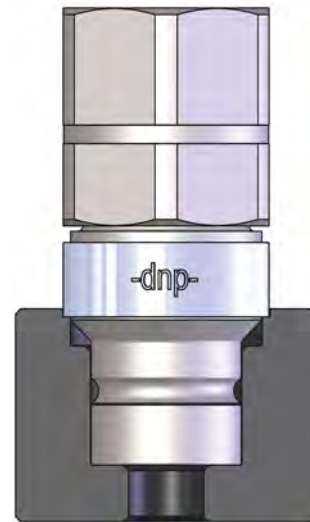
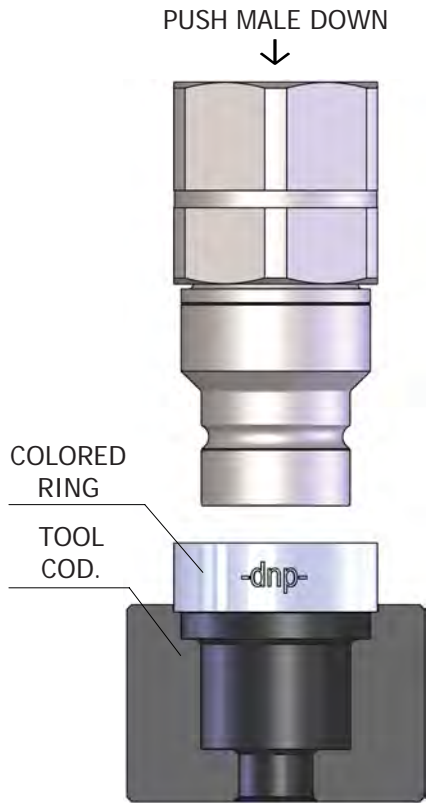
COD M.	
PLT4.3031.113	
PLT4.3031.013	
PLT4.3041.033	

COD M.	
PLT4.3025.113	
PLT4.3025.013	
PLT4.3033.033	

TOOL COD.		
PLT.025.8X3		
PLT4 DN25 - ISO 19		
CODE	COLOR	MATERIAL
PLT.025.803	●	PP
PLT.025.813	●	PP
PLT.025.823	●	PP
PLT.025.833	●	PP
PLT.025.843	●	PP
PLT.025.853	○	PP
PLT.025.863	●	PP
PLT.025.873	●	PP
PLT.025.883	●	PP
PLT.025.893	●	PP

TOOL COD.		
PLT.030.8X3		
PLT4 DN30 - ISO 25		
CODE	COLOR	MATERIAL
PLT.030.803	●	PP
PLT.030.813	●	PP
PLT.030.823	●	PP
PLT.030.833	●	PP
PLT.030.843	●	PP
PLT.030.853	○	PP
PLT.030.863	●	PP
PLT.030.873	●	PP
PLT.030.883	●	PP
PLT.030.893	●	PP

TOOL COD.		
PLT.031.8X3		
PLT4 DN30 - ISO 25		
CODE	COLOR	MATERIAL
PLT.031.803	●	PP
PLT.031.813	●	PP
PLT.031.823	●	PP
PLT.031.833	●	PP
PLT.031.843	●	PP
PLT.031.853	○	PP
PLT.031.863	●	PP
PLT.031.873	●	PP
PLT.031.883	●	PP
PLT.031.893	●	PP

MALE: ASSEMBLY INSTRUCTIONS OF COLORED RINGS/PART NUMBERS

FINAL RESULT
TOOL COD.
PLT.025.8X3
PLT5 DN25 - ISO 19

CODE	COLOR	MATERIAL
PLT.025.803	●	PP
PLT.025.813	●	PP
PLT.025.823	●	PP
PLT.025.833	●	PP
PLT.025.843	●	PP
PLT.025.853	○	PP
PLT.025.863	●	PP
PLT.025.873	●	PP
PLT.025.883	●	PP
PLT.025.893	●	PP

TOOL COD.
PLT.031.8X3
PLT5 DN30 - ISO 25

CODE	COLOR	MATERIAL
PLT.031.803	●	PP
PLT.031.813	●	PP
PLT.031.823	●	PP
PLT.031.833	●	PP
PLT.031.843	●	PP
PLT.031.853	○	PP
PLT.031.863	●	PP
PLT.031.873	●	PP
PLT.031.883	●	PP
PLT.031.893	●	PP

FEMALE: ASSEMBLY INSTRUCTIONS OF COLORED RINGS/PART NUMBERS

PUSH FEMALE DOWN



FINAL RESULT

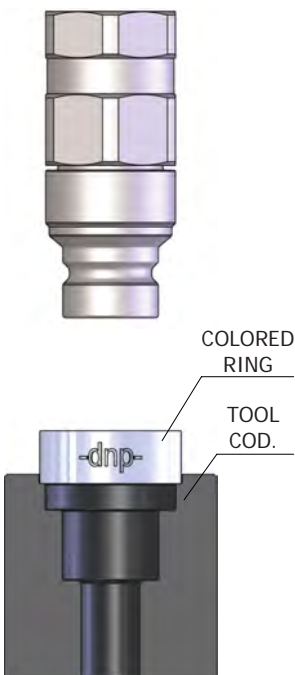


PLT6 DN06 - ISO 6.3		
CODE	COLOR	MATERIAL
PLT.006.802	Red	TPEE
PLT.006.812	Yellow	TPEE
PLT.006.822	Green	TPEE
PLT.006.832	Blue	TPEE
PLT.006.842	Black	TPEE
PLT.006.852	White	TPEE
PLT.006.862	Grey	TPEE
PLT.006.872	Orange	TPEE
PLT.006.882	Purple	TPEE
PLT.006.892	Brown	TPEE

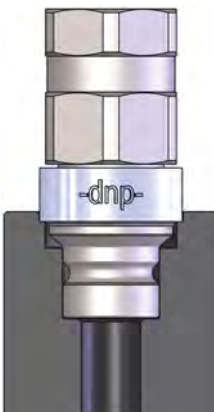
PLT6 DN13 - ISO 10		
CODE	COLOR	MATERIAL
PLT.013.802	Red	TPEE
PLT.013.812	Yellow	TPEE
PLT.013.822	Green	TPEE
PLT.013.832	Blue	TPEE
PLT.013.842	Black	TPEE
PLT.013.852	White	TPEE
PLT.013.862	Grey	TPEE
PLT.013.872	Orange	TPEE
PLT.013.882	Purple	TPEE
PLT.013.892	Brown	TPEE

MALE: ASSEMBLY INSTRUCTIONS OF COLORED RINGS/PART NUMBERS

PUSH MALE DOWN



FINAL RESULT



TOOL COD. PLT.006.8X3		
PLT6 DN06 - ISO 6.3		
CODE	COLOR	MATERIAL
PLT.006.803	Red	PP
PLT.006.813	Yellow	PP
PLT.006.823	Green	PP
PLT.006.833	Blue	PP
PLT.006.843	Black	PP
PLT.006.853	White	PP
PLT.006.863	Grey	PP
PLT.006.873	Orange	PP
PLT.006.883	Purple	PP
PLT.006.893	Brown	PP

TOOL COD. PLT.613.8X3		
PLT6 DN13 - ISO 10		
CODE	COLOR	MATERIAL
PLT.613.803	Red	PP
PLT.613.813	Yellow	PP
PLT.613.823	Green	PP
PLT.613.833	Blue	PP
PLT.613.843	Black	PP
PLT.613.853	White	PP
PLT.613.863	Grey	PP
PLT.613.873	Orange	PP
PLT.613.883	Purple	PP
PLT.613.893	Brown	PP

FEMALE: ASSEMBLY INSTRUCTIONS OF COLORED RINGS/PART NUMBERS

PUSH FEMALE DOWN



FINAL RESULT



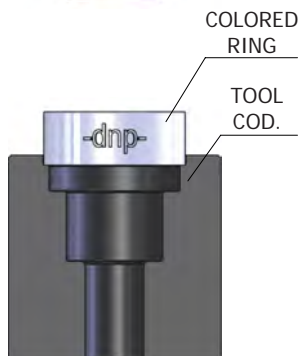
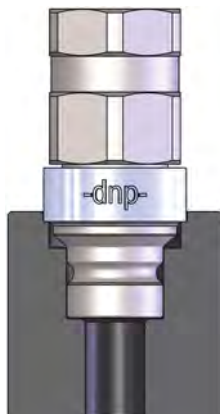
PLT7 DN06 - ISO 6.3		
CODE	COLOR	MATERIAL
PLT.006.802	●	TPEE
PLT.006.812	●	TPEE
PLT.006.822	●	TPEE
PLT.006.832	●	TPEE
PLT.006.842	●	TPEE
PLT.006.852	○	TPEE
PLT.006.862	●	TPEE
PLT.006.872	●	TPEE
PLT.006.882	●	TPEE
PLT.006.892	●	TPEE

MALE: ASSEMBLY INSTRUCTIONS OF COLORED RINGS/PART NUMBERS

PUSH MALE DOWN

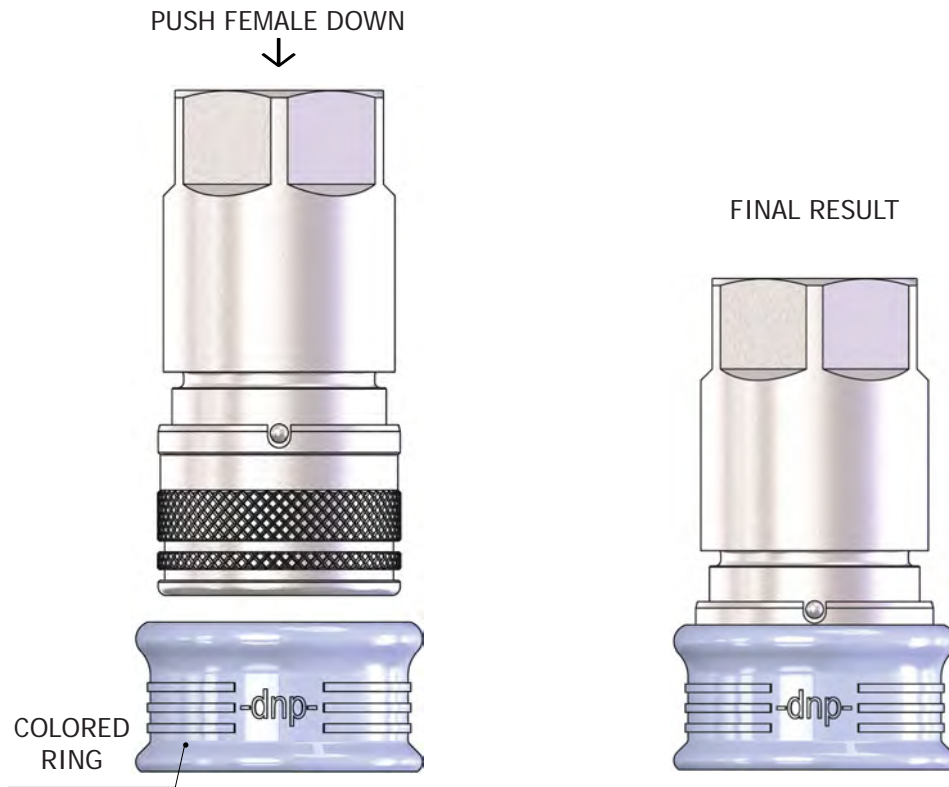


FINAL RESULT



TOOL COD.		
PLT.706.8X3		
PLT7 DN06 - ISO 6.3		
CODE	COLOR	MATERIAL
PLT.006.803	●	PP
PLT.006.813	●	PP
PLT.006.823	●	PP
PLT.006.833	●	PP
PLT.006.843	●	PP
PLT.006.853	○	PP
PLT.006.863	●	PP
PLT.006.873	●	PP
PLT.006.883	●	PP
PLT.006.893	●	PP

FEMALE: ASSEMBLY INSTRUCTIONS OF COLORED RINGS/PART NUMBERS



PLTX DN06 - ISO 6.3

CODE	COLOR	MATERIAL
PLT.006.802	●	TPEE
PLT.006.812	●	TPEE
PLT.006.822	●	TPEE
PLT.006.832	●	TPEE
PLT.006.842	●	TPEE
PLT.006.852	○	TPEE
PLT.006.862	●	TPEE
PLT.006.872	●	TPEE
PLT.006.882	●	TPEE
PLT.006.892	●	TPEE

PLTX DN13 - ISO 10

CODE	COLOR	MATERIAL
PLT.013.802	●	TPEE
PLT.013.812	●	TPEE
PLT.013.822	●	TPEE
PLT.013.832	●	TPEE
PLT.013.842	●	TPEE
PLT.013.852	○	TPEE
PLT.013.862	●	TPEE
PLT.013.872	●	TPEE
PLT.013.882	●	TPEE
PLT.013.892	●	TPEE

PLTX DN20 - ISO 12.5

CODE	COLOR	MATERIAL
PLT.019.802	●	TPEE
PLT.019.812	●	TPEE
PLT.019.822	●	TPEE
PLT.019.832	●	TPEE
PLT.019.842	●	TPEE
PLT.019.852	○	TPEE
PLT.019.862	●	TPEE
PLT.019.872	●	TPEE
PLT.019.882	●	TPEE
PLT.019.892	●	TPEE

PLTX DN22 - ISO 16

CODE	COLOR	MATERIAL
PLT.022.802	●	TPEE
PLT.022.812	●	TPEE
PLT.022.822	●	TPEE
PLT.022.832	●	TPEE
PLT.022.842	●	TPEE
PLT.022.852	○	TPEE
PLT.022.862	●	TPEE
PLT.022.872	●	TPEE
PLT.022.882	●	TPEE
PLT.022.892	●	TPEE

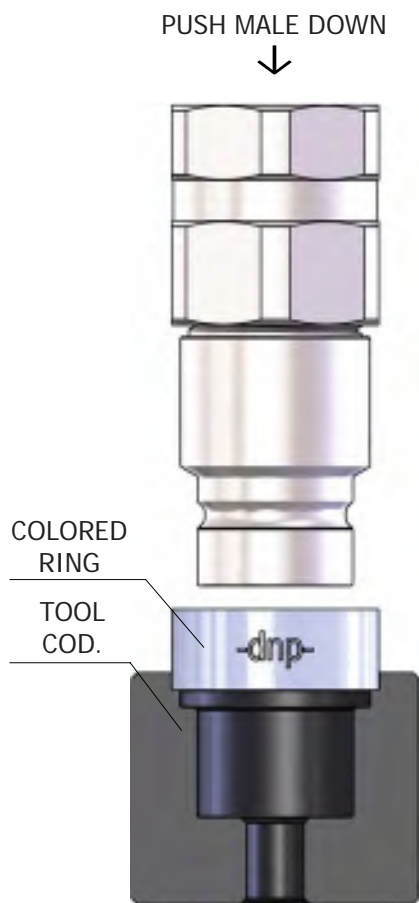
PLTX DN25 - ISO 19

CODE	COLOR	MATERIAL
PLT.025.802	●	TPEE
PLT.025.812	●	TPEE
PLT.025.822	●	TPEE
PLT.025.832	●	TPEE
PLT.025.842	●	TPEE
PLT.025.852	○	TPEE
PLT.025.862	●	TPEE
PLT.025.872	●	TPEE
PLT.025.882	●	TPEE
PLT.025.892	●	TPEE

PLTX DN30 - ISO 25

CODE	COLOR	MATERIAL
PLT.030.802	●	TPEE
PLT.030.812	●	TPEE
PLT.030.822	●	TPEE
PLT.030.832	●	TPEE
PLT.030.842	●	TPEE
PLT.030.852	○	TPEE
PLT.030.862	●	TPEE
PLT.030.872	●	TPEE
PLT.030.882	●	TPEE
PLT.030.892	●	TPEE

MALE: ASSEMBLY INSTRUCTIONS OF COLORED RINGS/PART NUMBERS

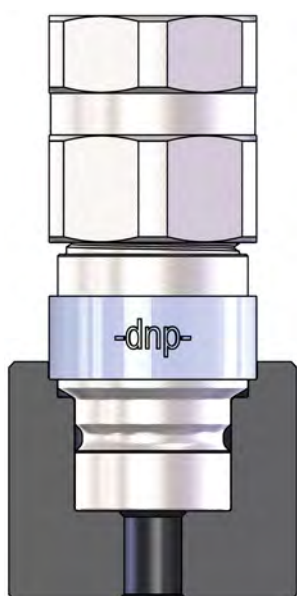


TOOL COD.		
PLT.006.8X3		
PLTX DN06 - ISO 6.3		
CODE	COLOR	MATERIAL
PLT.006.803	●	PP
PLT.006.813	●	PP
PLT.006.823	●	PP
PLT.006.833	●	PP
PLT.006.843	●	PP
PLT.006.853	○	PP
PLT.006.863	●	PP
PLT.006.873	●	PP
PLT.006.883	●	PP
PLT.006.893	●	PP

TOOL COD.		
PLT.013.8X3		
PLTX DN13 - ISO 10		
CODE	COLOR	MATERIAL
PLT.013.803	●	PP
PLT.013.813	●	PP
PLT.013.823	●	PP
PLT.013.833	●	PP
PLT.013.843	●	PP
PLT.013.853	○	PP
PLT.013.863	●	PP
PLT.013.873	●	PP
PLT.013.883	●	PP
PLT.013.893	●	PP

TOOL COD.		
PLT.019.8X3		
PLTX DN20 - ISO 12.5		
CODE	COLOR	MATERIAL
PLT.019.803	●	PP
PLT.019.813	●	PP
PLT.019.823	●	PP
PLT.019.833	●	PP
PLT.019.843	●	PP
PLT.019.853	○	PP
PLT.019.863	●	PP
PLT.019.873	●	PP
PLT.019.883	●	PP
PLT.019.893	●	PP

TOOL COD.		
PLT.022.8X3		
PLTX DN22 - ISO 16		
CODE	COLOR	MATERIAL
PLT.022.803	●	PP
PLT.022.813	●	PP
PLT.022.823	●	PP
PLT.022.833	●	PP
PLT.022.843	●	PP
PLT.022.853	○	PP
PLT.022.863	●	PP
PLT.022.873	●	PP
PLT.022.883	●	PP
PLT.022.893	●	PP



FINAL RESULT

TOOL COD.		
PLT.025.8X3		
PLTX DN25 - ISO 19		
CODE	COLOR	MATERIAL
PLT.025.803	●	PP
PLT.025.813	●	PP
PLT.025.823	●	PP
PLT.025.833	●	PP
PLT.025.843	●	PP
PLT.025.853	○	PP
PLT.025.863	●	PP
PLT.025.873	●	PP
PLT.025.883	●	PP
PLT.025.893	●	PP

TOOL COD.		
PLT.031.8X3		
PLTX DN30 - ISO 25		
CODE	COLOR	MATERIAL
PLT.031.803	●	PP
PLT.031.813	●	PP
PLT.031.823	●	PP
PLT.031.833	●	PP
PLT.031.843	●	PP
PLT.031.853	○	PP
PLT.031.863	●	PP
PLT.031.873	●	PP
PLT.031.883	●	PP
PLT.031.893	●	PP